

**Beaufort County EMS Oversight Committee  
Wednesday, January 14, 2026, Agenda 136 W  
2nd Street, Washington, NC 27889**

**A) Call to Order - Billy Respass**

**B) Opening Prayer - Chris Newkirk**

**C) Approval of Minutes - Billy Respass**

1. Minutes

**D) Old Business**

1. Franchise Application Update

**E) New Business**

1. 202 Year End Data Summary - Ryan Davis
2. Non-E Transport Update for 2026 - Jeff Hibbard
3. Requirement for Non-E Monthly Run Reports - Jeff Hibbard
4. Washington Second Unit Update — Steven Hodges
5. Community Paramedicine Update - Jeff Hibbard
6. College Update - Billy Respass

**F) Good of the Group**



Beaufort County  
Agenda Abstract

**Meeting Date: 1/14/2026**

**Agenda Section:** Approval of Minutes - Billy Respass

**Presenter:**

**Agenda Title:** Minutes

**Summary of Information:**

**Submitter Recommendation/Motions:**

**Attachments:**

1. Oversight Minutes Meeting 7\_23\_25

# **Beaufort County EMS System**

## **Oversight Committee Minutes From 7/23/2025**

Call to Order: Billy Respass called the meeting to order at 5:30 p.m.

Opening Prayer: Chris Newkirk led the opening prayer.

Approval of Minutes: Commissioner Frankie Waters made a motion to approve the minutes. Jeff Hibbard seconded. Minutes approved.

### **Old Business**

Budget Review of Contracted Services – All agreed that the new budget formatting was much improved. The budgets were submitted for approval.

### **New Business**

System Statistics Review – Ryan Davis gave a presentation on the statistics from July 1, 2024, through June 30, 2025. See attached.

Franchise Applications – Jeff Hibbard said all applications are being reviewed. Careline is currently in the process of getting the required insurance. A motion was made and seconded to take the applications to the Board of Commissioners for approval once completed.

Medical Directions Status Update – Chris Newkirk said that Dr. Andi had accepted another position within the ECU Hospital system and out of his role as Medical Director. We will start the process of finding a new Medical Director in the coming weeks. We will be working with ECU to find a Medical Director within the system.

Community Paramedic Update – Chris Newkirk said it's been about 5 months, and we are starting to see results. Crystal is currently working on about 22 patients. We had 2 goals with this program. One was to reduce frequent faces calls. She started with the top 20 on the list and as of now they are no longer on the top 20 list. We have been working to extend the funding until next July with our current funding. Drew Puskas asked if there is room for expansion and is there a need for it. Chris Newkirk said we are still getting those metrics and the potential is there. We are don't have enough data yet to determine if we need more Community Paramedics.

FY 25-26 Budgeting Initiatives – Chris Newkirk said most notable success was Washington getting a second EMS truck. They are working through the staffing process now. The Commissioners supported an initiative for Beaufort County's EMS agencies that would allow us to pay employees to attend classes to advance their certifications. Another positive is the Board approved for us to keep the current tax rates the same and applied it to the new evaluations which will produce more income.

College Report – Billy Respass said we have an AP class coming up. We also have an AEMT to Paramedic class hopefully coming mid-October. We are in the final phases of our accreditation process. We have received an ambulance through a grant to be used for mobile simulation. The current EMT class is just about full. We got an update from the state the other day and in 2023 there were only 494 Paramedics tested in the state. We are losing them faster than we can gain them.

## **Open Discussion**

Steven Hodges said they plan on having the truck up and running by the end of December. Billy Respass said he would like to go ahead and set the next meeting date. Chris Newkirk said we will go for October 13th with a backup date of the 22<sup>nd</sup>.

Being no further business the meeting was adjourned.

Beaufort County EMS System 24-25

Agency	PCR's	%age
<b>City Of Washington Fire/EMS</b>	<b>3467</b>	<b>38.39%</b>
Fire Station 2	3123	34.58%
Fire Station 1	341	3.78%
(blank)	3	0.03%
<b>Beaufort County EMS</b>	<b>2584</b>	<b>28.61%</b>
Old Ford Station	824	9.12%
Belhaven Station	753	8.34%
Bath Station	601	6.65%
Blounts Creek Station	352	3.90%
Bath Station (M3)	39	0.43%
Special Operation	15	0.17%
<b>Chocowinity EMS</b>	<b>1269</b>	<b>14.05%</b>
Town of Chocowinity EMS	1269	14.05%
<b>Broad Creek EMS</b>	<b>1110</b>	<b>12.29%</b>
Broad Creek	1109	12.28%
(blank)	1	0.01%
<b>Aurora EMS</b>	<b>411</b>	<b>4.55%</b>
Aurora Rescue Squad	411	4.55%
<b>Pinetown EMS</b>	<b>179</b>	<b>1.98%</b>
Pinetown EMS Station	179	1.98%
<b>Nutrien EMS</b>	<b>11</b>	<b>0.12%</b>
Station 1	11	0.12%
<b>Grand Total</b>	<b>9031</b>	<b>100.00%</b>

**Beaufort County EMS System 24-25**

*Transfer/Assist Filtered*

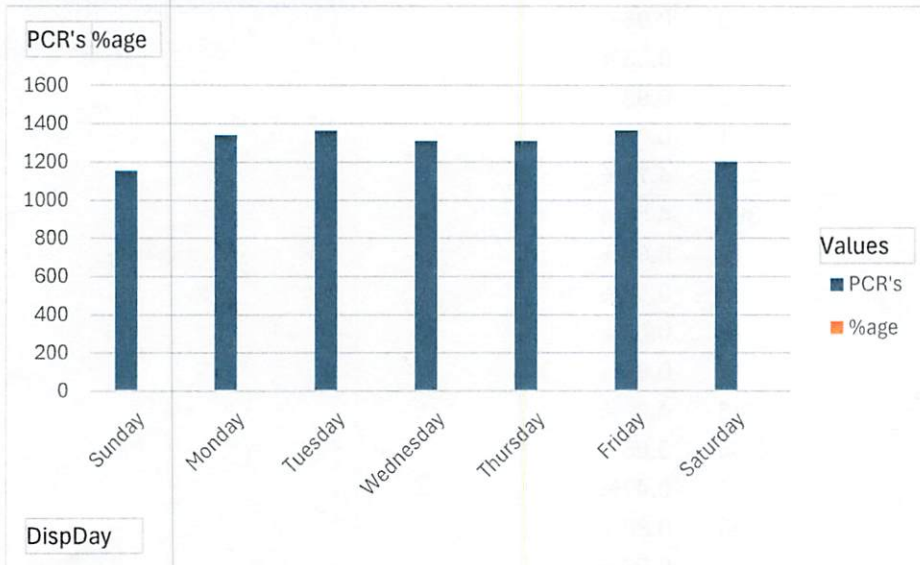
**Disposition (Multiple Items)**

<b>Responding/Zone</b>	<b>PCR's</b>	<b>%age</b>
<b>City of Washington</b>	<b>3142</b>	<b>36.31%</b>
City of Washington	2906	33.58%
Chocowinity	125	1.44%
Old Ford (EMS-7)	54	0.62%
Broad Creek	40	0.46%
Belhaven (EMS-8)	6	0.07%
Pitt County	3	0.03%
Bath (EMS-6)	3	0.03%
Blounts Creek (EMS-4)	2	0.02%
Pinetown	2	0.02%
Craven County	1	0.01%
<b>Chocowinity</b>	<b>1262</b>	<b>14.58%</b>
Chocowinity	1028	11.88%
City of Washington	204	2.36%
Blounts Creek (EMS-4)	14	0.16%
Old Ford (EMS-7)	9	0.10%
Broad Creek	5	0.06%
Martin County	1	0.01%
Craven County	1	0.01%
<b>Broad Creek</b>	<b>1110</b>	<b>12.83%</b>
Broad Creek	851	9.83%
City of Washington	204	2.36%
Pinetown	14	0.16%
Belhaven (EMS-8)	13	0.15%
Old Ford (EMS-7)	12	0.14%
Bath (EMS-6)	10	0.12%
Chocowinity	3	0.03%
Blounts Creek (EMS-4)	2	0.02%
Blounts Creek	1	0.01%
<b>Old Ford (EMS-7)</b>	<b>822</b>	<b>9.50%</b>
Old Ford (EMS-7)	652	7.53%
City of Washington	137	1.58%
Chocowinity	20	0.23%
Broad Creek	5	0.06%
Bath (EMS-6)	3	0.03%
Pitt County	2	0.02%
Pinetown	1	0.01%
Blounts Creek (EMS-4)	1	0.01%
Belhaven (EMS-8)	1	0.01%

<b>Belhaven (EMS-8)</b>	<b>746</b>	<b>8.62%</b>
Belhaven (EMS-8)	702	8.11%
Bath (EMS-6)	22	0.25%
Hyde County	13	0.15%
Broad Creek	5	0.06%
Pinetown	4	0.05%
<b>Bath (EMS-6)</b>	<b>597</b>	<b>6.90%</b>
Bath (EMS-6)	432	4.99%
Belhaven (EMS-8)	118	1.36%
Broad Creek	29	0.34%
Pinetown	6	0.07%
Hyde County	5	0.06%
Old Ford (EMS-7)	3	0.03%
City of Washington	3	0.03%
Chocowinity	1	0.01%
<b>Aurora</b>	<b>409</b>	<b>4.73%</b>
Aurora	396	4.58%
Blounts Creek (EMS-4)	7	0.08%
Pamlico County	3	0.03%
Blounts Creek	2	0.02%
Chocowinity	1	0.01%
<b>Blounts Creek (EMS-4)</b>	<b>348</b>	<b>4.02%</b>
Blounts Creek (EMS-4)	265	3.06%
Chocowinity	41	0.47%
Aurora	33	0.38%
City of Washington	8	0.09%
Craven County	1	0.01%
<b>Pinetown</b>	<b>177</b>	<b>2.05%</b>
Pinetown	164	1.90%
Belhaven (EMS-8)	8	0.09%
Bath (EMS-6)	4	0.05%
Broad Creek	1	0.01%
<b>Bath (MED 3)</b>	<b>35</b>	<b>0.40%</b>
Pinetown	16	0.18%
Belhaven (EMS-8)	11	0.13%
Bath (EMS-6)	6	0.07%
Old Ford (EMS-7)	2	0.02%
<b>Nutrien</b>	<b>5</b>	<b>0.06%</b>
Nutrien	5	0.06%
<b>Grand Total</b>	<b>8653</b>	<b>100.00%</b>

### Beaufort County EMS System 24-25

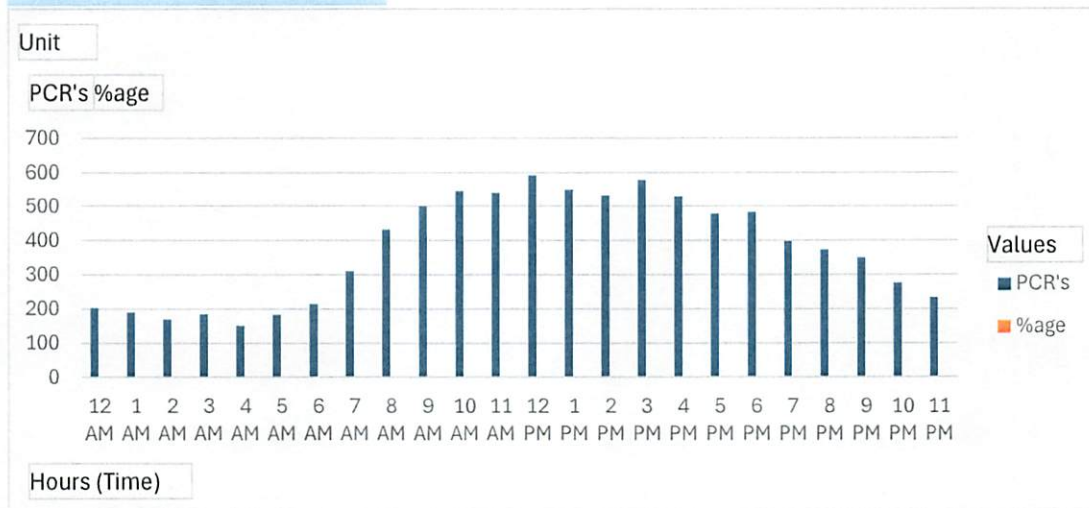
Weekday	PCR's	%age
Sunday	1150	12.73%
Monday	1338	14.82%
Tuesday	1361	15.07%
Wednesday	1308	14.48%
Thursday	1308	14.48%
Friday	1365	15.11%
Saturday	1201	13.30%
<b>Grand Total</b>	<b>9031</b>	<b>100.00%</b>



# Beaufort County EMS System 24-25

Unit (All)

Hours	PCR's	%age
12 AM	205	2.27%
1 AM	191	2.11%
2 AM	171	1.89%
3 AM	187	2.07%
4 AM	152	1.68%
5 AM	185	2.05%
6 AM	216	2.39%
7 AM	312	3.45%
8 AM	433	4.79%
9 AM	502	5.56%
10 AM	547	6.06%
11 AM	541	5.99%
12 PM	594	6.58%
1 PM	551	6.10%
2 PM	533	5.90%
3 PM	580	6.42%
4 PM	531	5.88%
5 PM	480	5.32%
6 PM	484	5.36%
7 PM	399	4.42%
8 PM	374	4.14%
9 PM	351	3.89%
10 PM	278	3.08%
11 PM	234	2.59%
<b>Grand Total</b>	<b>9031</b>	<b>100.00%</b>

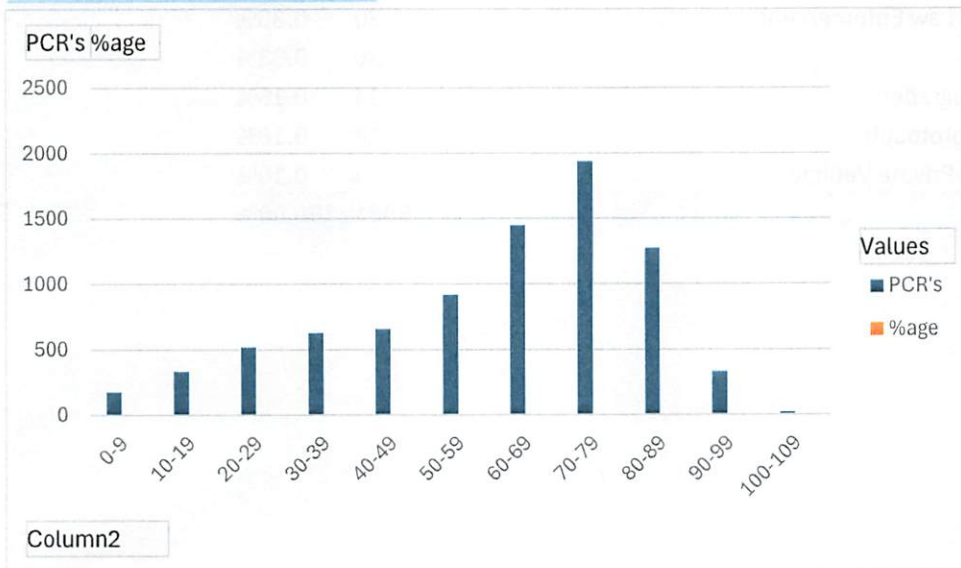


Beaufort County EMS System 24-25

Disposition	(Multiple Items)		
<i>Transfer/Assist Filtered</i>			
Zone	PCR's	%age	
City of Washington	3462	40.01%	
Chocowinity	1219	14.09%	
Broad Creek	936	10.82%	
Belhaven (EMS-8)	859	9.93%	
Old Ford (EMS-7)	732	8.46%	
Bath (EMS-6)	480	5.55%	
Aurora	429	4.96%	
Blounts Creek (EMS-4)	291	3.36%	
Pinetown	207	2.39%	
Hyde County	18	0.21%	
Pitt County	5	0.06%	
Nutrien	5	0.06%	
Blounts Creek	3	0.03%	
Pamlico County	3	0.03%	
Craven County	3	0.03%	
Martin County	1	0.01%	
<b>Grand Total</b>	<b>8653</b>	<b>100.00%</b>	

## Beaufort County EMS System 24-25

Age	PCR's	%age
0-9	178	2.16%
10-19	337	4.08%
20-29	521	6.31%
30-39	629	7.62%
40-49	658	7.97%
50-59	921	11.16%
60-69	1450	17.57%
70-79	1940	23.50%
80-89	1272	15.41%
90-99	331	4.01%
100-109	17	0.21%
<b>Grand Total</b>	<b>8254</b>	<b>100.00%</b>



**Beaufort County EMS System 24-25**

<b>Disposition</b>	<b>PCR's</b>	<b>%age</b>
Transported No Lights/Siren	4525	50.11%
Transported Lights/Siren	1407	15.58%
Patient Refused Evaluation/Care (Without Transport)	1258	13.93%
Patient Treated, Transferred Care to Another EMS Professional/Unit	348	3.85%
(blank)	324	3.59%
Cancelled (Prior to Arrival at Scene)	269	2.98%
Patient Evaluated, No Treatment/Transport Required	188	2.08%
Cancelled on Scene/No Patient Found	158	1.75%
Cancelled (No Patient Contact)	143	1.58%
Patient Treated, Released (AMA)	141	1.56%
Assist, Public	104	1.15%
Transported Lights/Siren, Downgraded	69	0.76%
Patient Treated, Transported by Law Enforcement	30	0.33%
Assist, Agency	30	0.33%
Transported No Lights/Siren, Upgraded	14	0.16%
Patient Treated, Released (per protocol)	14	0.16%
Patient Treated, Transported by Private Vehicle	9	0.10%
<b>Grand Total</b>	<b>9031</b>	<b>100.00%</b>

### Beaufort County EMS System 24-25

EMD Complaint	PCR's	%age
Sick Person	2383	26.39%
Falls	1342	14.86%
Breathing Problem	1087	12.04%
Traffic Accident	888	9.83%
Chest Pain (Non-Traumatic)	598	6.62%
Unconscious/Fainting	367	4.06%
Convulsions/Seizure	264	2.92%
Stroke/CVA	190	2.10%
Abdominal Pain/Problems	179	1.98%
Cardiac Arrest/Death	177	1.96%
Hemorrhage/Laceration	174	1.93%
Overdose/Poisoning/Ingestion	120	1.33%
Fire	117	1.30%
Diabetic Problem	110	1.22%
Medical Alarm	104	1.15%
Heart Problems/AICD	95	1.05%
Standby	89	0.99%
Assault	89	0.99%
Altered Mental Status	81	0.90%
Traumatic Injury	79	0.87%
No Other Appropriate Choice	69	0.76%
Back Pain (Non-Traumatic)	59	0.65%
Allergic Reaction/Stings	55	0.61%
Psychiatric Problem/Abnormal Behavior/Suicide Attempt	42	0.47%
Headache	38	0.42%
Unknown Problem/Person Down	38	0.42%
Assist Invalid	38	0.42%
Pregnancy/Childbirth	22	0.24%
Vomiting	19	0.21%
Choking	18	0.20%
Stab/Gunshot Wound/Penetrating Trauma	18	0.20%
Well Person Check	15	0.17%
Heat/Cold Exposure	14	0.16%
Animal Bite	12	0.13%
Nausea	8	0.09%
Eye Problem/Injury	7	0.08%
Burns/Explosion	5	0.06%
Boating Accident	4	0.04%
Carbon Monoxide/Hazmat/Inhalation/CBRN	4	0.04%
EMS Special Service	3	0.03%
Electrocution/Lightning	3	0.03%

Automated Crash Notification	2	0.02%
Healthcare Professional/Admission	2	0.02%
Drowning/Diving/SCUBA Accident	1	0.01%
Industrial Accident/Inaccessible Incident/Other Entrapments (non-vehicle)	1	0.01%
Transfer/Interfacility/Palliative Care	1	0.01%
<b>Grand Total</b>	<b>9031</b>	<b>100.00%</b>



Beaufort County  
Agenda Abstract

**Meeting Date: 1/14/2026**

**Agenda Section:** Old Business

**Presenter:**

**Agenda Title:** Franchise Application Update

**Summary of Information:**

**Submitter Recommendation/Motions:**

**Attachments:**

None



Beaufort County  
Agenda Abstract

**Meeting Date: 1/14/2026**

**Agenda Section:** New Business

**Presenter:**

**Agenda Title:** 202 Year End Data Summary - Ryan Davis

**Summary of Information:**

**Submitter Recommendation/Motions:**

**Attachments:**

1. 1\_14\_26 Data Summary

## Beaufort County EMS System 2025

Agency	PCR's	%age
<b>City of Washington</b>	<b>3908</b>	<b>40.06%</b>
Fire Station 2	2728	27.96%
Fire Station 1	1180	12.10%
<b>Beaufort County EMS</b>	<b>2653</b>	<b>27.19%</b>
Old Ford Station	805	8.25%
Belhaven Station	781	8.01%
Bath Station	613	6.28%
Blounts Creek Station	387	3.97%
Bath Station (M3)	36	0.37%
Special Operation	31	0.32%
<b>Chocowinity EMS</b>	<b>1432</b>	<b>14.68%</b>
Town of Chocowinity EMS	1432	14.68%
<b>Broad Creek EMS</b>	<b>1180</b>	<b>12.10%</b>
Broad Creek EMS	1180	12.10%
<b>Aurora EMS</b>	<b>380</b>	<b>3.90%</b>
Aurora Rescue Squad	380	3.90%
<b>Pinetown EMS</b>	<b>186</b>	<b>1.91%</b>
Pinetown EMS Station	186	1.91%
<b>Nutrien EMS</b>	<b>17</b>	<b>0.17%</b>
Nutrien Station 1	17	0.17%
<b>Grand Total</b>	<b>9756</b>	<b>100.00%</b>

**Beaufort County EMS System 2025**

*Actual Pt Contact Made*

Disposition	(Multiple Items)
Agency	Patient Contacts
<b>City of Washington</b>	<b>3626</b>
Fire Station 2	2510
Fire Station 1	1116
<b>Beaufort County EMS</b>	<b>2315</b>
Belhaven Station	713
Old Ford Station	700
Bath Station	540
Blounts Creek Station	339
Bath Station (M3)	22
Special Operation	1
<b>Chocowinity EMS</b>	<b>1277</b>
Town of Chocowinity EMS	1277
<b>Broad Creek EMS</b>	<b>1021</b>
Broad Creek EMS	1021
<b>Aurora EMS</b>	<b>345</b>
Aurora Rescue Squad	345
<b>Pinetown EMS</b>	<b>175</b>
Pinetown EMS Station	175
<b>Nutrien EMS</b>	<b>16</b>
Nutrien Station 1	16
<b>Grand Total</b>	<b>8775</b>

Beaufort County EMS System 2025

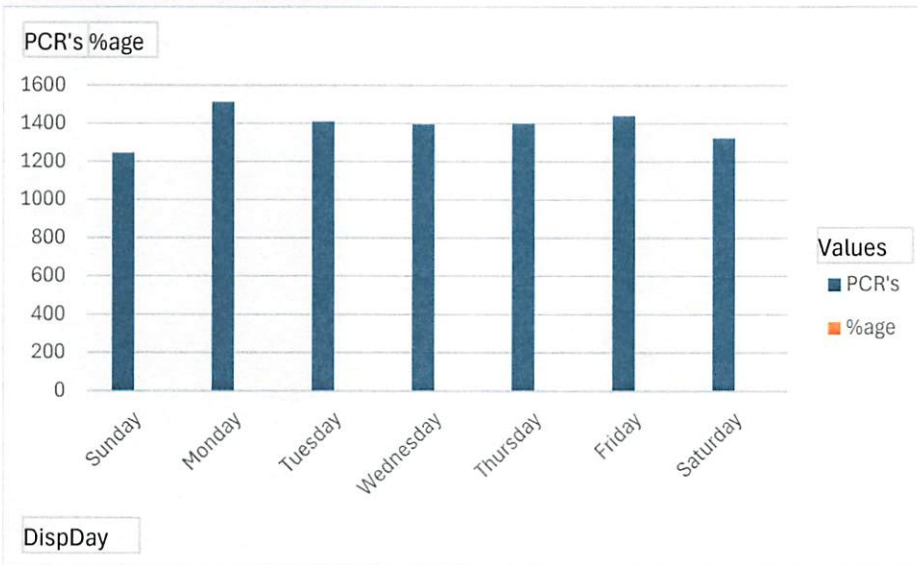
Transfer/Assist Filtered

Disposition (Multiple Items)

Responding/Zone	PCR's	%age
<b>City of Washington</b>	<b>3566</b>	<b>38.14%</b>
City of Washington	3316	35.47%
Chocowinity	142	1.52%
Old Ford (EMS-7)	50	0.53%
Broad Creek	45	0.48%
Belhaven (EMS-8)	4	0.04%
Pitt County	3	0.03%
Bath (EMS-6)	3	0.03%
Pinetown	2	0.02%
Blounts Creek (EMS-4)	1	0.01%
<b>Chocowinity</b>	<b>1427</b>	<b>15.26%</b>
Chocowinity	1172	12.53%
City of Washington	226	2.42%
Blounts Creek (EMS-4)	18	0.19%
Broad Creek	6	0.06%
Old Ford (EMS-7)	4	0.04%
Aurora	1	0.01%
<b>Broad Creek</b>	<b>1179</b>	<b>12.61%</b>
Broad Creek	847	9.06%
City of Washington	273	2.92%
Bath (EMS-6)	15	0.16%
Pinetown	13	0.14%
Belhaven (EMS-8)	11	0.12%
Blounts Creek	9	0.10%
Old Ford (EMS-7)	8	0.09%
Chocowinity	2	0.02%
Washington County	1	0.01%
<b>Old Ford (EMS-7)</b>	<b>801</b>	<b>8.57%</b>
Old Ford (EMS-7)	620	6.63%
City of Washington	147	1.57%
Chocowinity	23	0.25%
Broad Creek	4	0.04%
Pinetown	2	0.02%
Bath (EMS-6)	2	0.02%
Pitt County	1	0.01%
Washington County	1	0.01%
Belhaven (EMS-8)	1	0.01%
<b>Belhaven (EMS-8)</b>	<b>779</b>	<b>8.33%</b>
Bethaven (EMS-8)	731	7.82%
Bath (EMS-6)	32	0.34%
Hyde County	10	0.11%
City of Washington	3	0.03%
Broad Creek	1	0.01%
Pinetown	1	0.01%
Pamlico Beach	1	0.01%
<b>Bath (EMS-6)</b>	<b>633</b>	<b>6.77%</b>
Bath (EMS-6)	449	4.80%
Belhaven (EMS-8)	126	1.35%
Pinetown	21	0.22%
Broad Creek	21	0.22%
City of Washington	9	0.10%
Old Ford (EMS-7)	3	0.03%
Hyde County	2	0.02%
Pamlico Beach	2	0.02%
<b>Blounts Creek (EMS-4)</b>	<b>385</b>	<b>4.12%</b>
Blounts Creek (EMS-4)	276	2.95%
Chocowinity	62	0.66%
Aurora	37	0.40%
City of Washington	8	0.09%
Craven County	1	0.01%
Broad Creek	1	0.01%
<b>Aurora</b>	<b>380</b>	<b>4.06%</b>
Aurora	366	3.91%
Blounts Creek	11	0.12%
Pamlico County	3	0.03%
<b>Pinetown</b>	<b>184</b>	<b>1.97%</b>
Pinetown	163	1.74%
Belhaven (EMS-8)	14	0.15%
Bath (EMS-6)	4	0.04%
Broad Creek	2	0.02%
City of Washington	1	0.01%
<b>Nutrien</b>	<b>9</b>	<b>0.10%</b>
Nutrien	5	0.05%
Nutrien	4	0.04%
<b>Bath (Med-3)</b>	<b>7</b>	<b>0.07%</b>
Pinetown	6	0.06%
Bath (EMS-6)	1	0.01%
<b>Grand Total</b>	<b>9350</b>	<b>100.00%</b>

### Beaufort County EMS System 2025

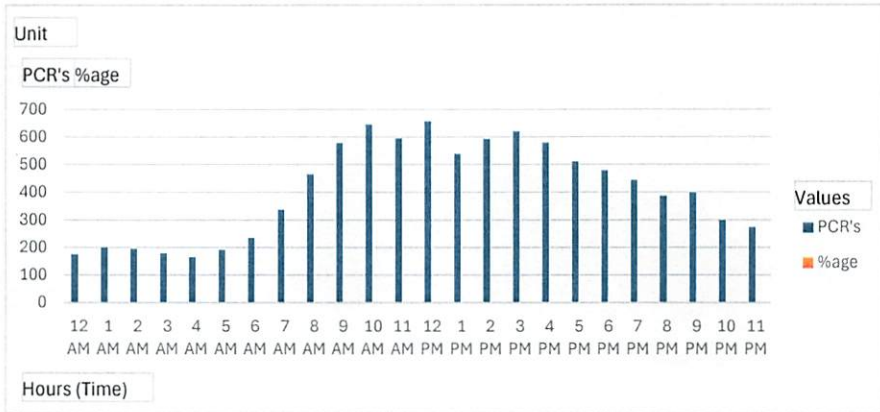
Weekday	PCR's	%age
Sunday	1251	12.82%
Monday	1515	15.53%
Tuesday	1414	14.49%
Wednesday	1400	14.35%
Thursday	1404	14.39%
Friday	1444	14.80%
Saturday	1328	13.61%
<b>Grand Total</b>	<b>9756</b>	<b>100.00%</b>



Beaufort County EMS System 2025

Unit (All)

Hours	PCR's	%age
12 AM	176	1.80%
1 AM	201	2.06%
2 AM	195	2.00%
3 AM	179	1.83%
4 AM	165	1.69%
5 AM	192	1.97%
6 AM	234	2.40%
7 AM	339	3.47%
8 AM	466	4.78%
9 AM	578	5.92%
10 AM	646	6.62%
11 AM	596	6.11%
12 PM	657	6.73%
1 PM	539	5.52%
2 PM	594	6.09%
3 PM	621	6.37%
4 PM	580	5.95%
5 PM	512	5.25%
6 PM	479	4.91%
7 PM	445	4.56%
8 PM	388	3.98%
9 PM	399	4.09%
10 PM	300	3.08%
11 PM	275	2.82%
<b>Grand Total</b>	<b>9756</b>	<b>100.00%</b>

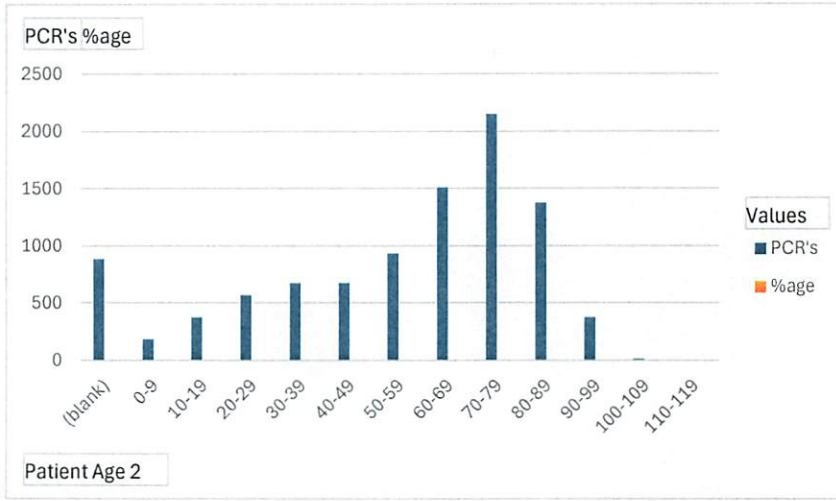


**Beaufort County EMS System 2025**

Disposition		(Multiple Items)	
<i>Transfer/Assist Filtered</i>			
Zone	PCR's	%age	
City of Washington	3983	42.60%	
Chocowinity	1401	14.98%	
Broad Creek	927	9.91%	
Belhaven (EMS-8)	887	9.49%	
Old Ford (EMS-7)	685	7.33%	
Bath (EMS-6)	506	5.41%	
Aurora	404	4.32%	
Blounts Creek (EMS-4)	295	3.16%	
Pinetown	208	2.22%	
Blounts Creek	20	0.21%	
Hyde County	12	0.13%	
Nutrien	5	0.05%	
Pitt County	4	0.04%	
Nutrien	4	0.04%	
Pamlico County	3	0.03%	
Pamlico Beach	3	0.03%	
Washington County	2	0.02%	
Craven County	1	0.01%	
<b>Grand Total</b>	<b>9350</b>	<b>100.00%</b>	

**Beaufort County EMS System 2025**

Age	PCR's	%age
(blank)	889	9.11%
0-9	188	1.93%
10-19	381	3.91%
20-29	570	5.84%
30-39	678	6.95%
40-49	678	6.95%
50-59	934	9.57%
60-69	1511	15.49%
70-79	2151	22.05%
80-89	1379	14.13%
90-99	380	3.90%
100-109	16	0.16%
110-119	1	0.01%
<b>Grand Total</b>	<b>9756</b>	<b>100.00%</b>



### Beaufort County EMS System 2025

Disposition	PCR's	%age
Transported No Lights/Siren	5276	55.25%
Patient Refused Evaluation/Care (Without Transport)	1395	14.61%
Transported Lights/Siren	1071	11.21%
Patient Treated, Transferred Care to Another EMS Professional/Unit	373	3.91%
Cancelled (Prior to Arrival at Scene)	347	3.63%
Patient Treated, Released (AMA)	217	2.27%
Cancelled on Scene/No Patient Found	213	2.23%
Patient Evaluated, No Treatment/Transport Required	188	1.97%
Cancelled (No Patient Contact)	182	1.91%
Assist, Public	126	1.32%
Transported Lights/Siren, Downgraded	60	0.63%
Assist, Agency	33	0.35%
Patient Treated, Transported by Law Enforcement	22	0.23%
Transported No Lights/Siren, Upgraded	20	0.21%
Patient Treated, Released (per protocol)	18	0.19%
Patient Treated, Transported by Private Vehicle	9	0.09%
<b>Grand Total</b>	<b>9550</b>	<b>100.00%</b>

Beaufort County EMS System 2025

EMD Complaint	PCR's	%age
Sick Person	2613	26.78%
Falls	1423	14.59%
Breathing Problem	1154	11.83%
Traffic Accident	995	10.20%
Chest Pain (Non-Traumatic)	686	7.03%
Unconscious/Fainting	367	3.76%
Convulsions/Seizure	243	2.49%
Stroke/CVA	186	1.91%
Abdominal Pain/Problems	182	1.87%
Cardiac Arrest/Death	172	1.76%
Hemorrhage/Laceration	169	1.73%
Fire	155	1.59%
Medical Alarm	140	1.44%
Overdose/Poisoning/Ingestion	127	1.30%
No Other Appropriate Choice	109	1.12%
Assault	108	1.11%
Heart Problems/AICD	106	1.09%
Diabetic Problem	103	1.06%
Standby	90	0.92%
Altered Mental Status	86	0.88%
Traumatic Injury	80	0.82%
Back Pain (Non-Traumatic)	71	0.73%
Allergic Reaction/Stings	65	0.67%
Unknown Problem/Person Down	48	0.49%
Headache	39	0.40%
Psychiatric Problem/Abnormal Behavior/Suicide Attempt	33	0.34%
Assist Invalid	30	0.31%
Pregnancy/Childbirth	28	0.29%
Choking	23	0.24%
Heat/Cold Exposure	20	0.21%
Stab/Gunshot Wound/Penetrating Trauma	18	0.18%
Well Person Check	17	0.17%
Vomiting	16	0.16%
Eye Problem/Injury	13	0.13%
Boating Accident	8	0.08%
Animal Bite	8	0.08%
Burns/Explosion	7	0.07%
Nausea	5	0.05%
Carbon Monoxide/Hazmat/Inhalation/CBRN	5	0.05%
EMS Special Service	3	0.03%
Drowning/Diving/SCUBA Accident	1	0.01%
Healthcare Professional/Admission	1	0.01%
Transfer/Interfacility/Palliative Care	1	0.01%
Electrocution/Lightning	1	0.01%
Automated Crash Notification	1	0.01%
<b>Grand Total</b>	<b>9756</b>	<b>100.00%</b>

**Beaufort County EMS System 2024**

Agency/Station	PCR'S	%PCR'S
<b>City Of Washington EMS</b>	<b>3111</b>	<b>36.66%</b>
Fire Station 2	2871	33.83%
Fire Station 1	240	2.83%
<b>Beaufort County EMS</b>	<b>2573</b>	<b>30.32%</b>
Old Ford Station	761	8.97%
Belhaven Station	747	8.80%
Bath Station	586	6.91%
Blounts Creek Station	281	3.31%
Pinetown EMS Station	193	2.27%
Bath Station M3	5	0.06%
<b>Town Of Chocowinity EMS</b>	<b>1317</b>	<b>15.52%</b>
Town of Chocowinity EMS	1317	15.52%
<b>Broad Creek EMS</b>	<b>1035</b>	<b>12.20%</b>
Broad Creek	1035	12.20%
<b>Aurora EMS</b>	<b>440</b>	<b>5.19%</b>
Aurora Rescue Squad	440	5.19%
<b>Nutrien EMS</b>	<b>10</b>	<b>0.12%</b>
Station 1	10	0.12%
<b>Grand Total</b>	<b>8486</b>	<b>100.00%</b>

**Beaufort County EMS System 2025**

Agency	PCR's	%age
<b>City of Washington</b>	<b>3908</b>	<b>40.06%</b>
Fire Station 2	2728	27.96%
Fire Station 1	1180	12.10%
<b>Beaufort County EMS</b>	<b>2653</b>	<b>27.19%</b>
Old Ford Station	805	8.25%
Belhaven Station	781	8.01%
Bath Station	613	6.28%
Blounts Creek Station	387	3.97%
Bath Station (M3)	36	0.37%
Special Operation	31	0.32%
<b>Chocowinity EMS</b>	<b>1432</b>	<b>14.68%</b>
Town of Chocowinity EMS	1432	14.68%
<b>Broad Creek EMS</b>	<b>1180</b>	<b>12.10%</b>
Broad Creek EMS	1180	12.10%
<b>Aurora EMS</b>	<b>380</b>	<b>3.90%</b>
Aurora Rescue Squad	380	3.90%
<b>Pinetown EMS</b>	<b>186</b>	<b>1.91%</b>
Pinetown EMS Station	186	1.91%
<b>Nutrien EMS</b>	<b>17</b>	<b>0.17%</b>
Nutrien Station 1	17	0.17%
<b>Grand Total</b>	<b>9756</b>	<b>100.00%</b>



Beaufort County  
Agenda Abstract

**Meeting Date: 1/14/2026**

**Agenda Section:** New Business

**Presenter:**

**Agenda Title:** Non-E Transport Update for 2026 - Jeff Hibbard

**Summary of Information:**

**Submitter Recommendation/Motions:**

**Attachments:**

None



Beaufort County  
Agenda Abstract

**Meeting Date: 1/14/2026**

**Agenda Section:** New Business

**Presenter:**

**Agenda Title:** Requirement for Non-E Monthly Run Reports - Jeff Hibbard

**Summary of Information:**

**Submitter Recommendation/Motions:**

**Attachments:**

None



Beaufort County  
Agenda Abstract

**Meeting Date: 1/14/2026**

**Agenda Section:** New Business

**Presenter:**

**Agenda Title:** Washington Second Unit Update — Steven Hodges

**Summary of Information:**

**Submitter Recommendation/Motions:**

**Attachments:**

None



Beaufort County  
Agenda Abstract

**Meeting Date: 1/14/2026**

**Agenda Section:** New Business

**Presenter:**

**Agenda Title:** Community Paramedicine Update - Jeff Hibbard

**Summary of Information:**

**Submitter Recommendation/Motions:**

**Attachments:**

None



Beaufort County  
Agenda Abstract

**Meeting Date: 1/14/2026**

**Agenda Section:** New Business

**Presenter:**

**Agenda Title:** College Update - Billy Respass

**Summary of Information:**

**Submitter Recommendation/Motions:**

**Attachments:**

None